

MOTHERS®

PRODUCT LINE





BACK-TO-BLACK® TIRE RENEW

#09324, 24 oz.

Mothers® Back-to-Black® Tire Renew is formulated with encapsulating cleaning agents to dissolve and lift stubborn browning, dirt, soil, grease, grime, road film, brake dust and old dressings from any color or brand of tire, even whitewalls. Modern chemistry ensures that our Back-to-Black® Tire Renew is tough on tenacious dirt, but gentle and safe on your tires, leaving a long-lasting, naturally clean surface. Just spray on and wipe off, it's that easy.



LEATHERTECH™ FOAMING WASH

#06410, 8 oz.

An industry first, air-infused rich lather cleansing solution penetrates and deep cleans stubborn stains from even the most neglected finished leather and vinyl surfaces. Our specially-formulated glycerin enriched micro-emulsion provides perfect moisture balance, while encapsulating agents safely dissolve and lift away dirt and debris, leaving your leather perfectly clean and ready for conditioning.



LEATHERTECH™ MOISTURE INFUSION GEL CREAM

#06310, 7 oz.

Mothers® LeatherTech™ Moisture Infusion features advanced multi-layer hydration and anti-aging properties, going beyond conventional conditioning methods to nourish and protect your finished leather surfaces in one simple step. Premium grade conditioners and aloe replenish natural oils lost to heat and sunlight over time, while our advanced moisture-lock preserves your leather and prevents future fading, drying and cracking. Used regularly, your leather will stay soft, supple, and looking new for years to come.

PROFESSIONAL PAINT RESTORATION SYSTEM

#08640, includes:

#08612, 12 oz. Rubbing Compound

#08712, 12 oz. Finishing Polish

Mothers® Professional Paint Restoration System uses the same industry-proven formulas found in body shops worldwide to give you a showroom new finish, without the guesswork. Recondition your paint from normal wear and tear, buff fresh paint after color sanding, or even improve your factory applied paint finish, especially clearcoats. Rubbing Compound works with your favorite buffer to quickly cut through water spots, and effortlessly remove heavy oxidation, car wash scratches and other defects. Finishing Polish removes compounding scratches, towel marks, swirls, hazing, holograms and other imperfections. Designed for the professional detailer, but simple enough for anyone, Mothers® streamlines paint correction to give you brilliant color, enhanced gloss, unmatched depth, and a perfectly prepared surface, ready for waxing.



In paint care, quality makes all the difference. That's why Mothers® has built its reputation on painstaking research, superior quality ingredients, and meticulous attention to detail.

CALIFORNIA GOLD® CARNAUBA WASH & WAX

#05674, 64 oz.

Mothers® Carnauba Wash & Wax is the quick and easy way to clean, shine and protect your paint. Used between regular waxing, Carnauba Wash & Wax easily dissolves and removes stubborn road grime and dirt, all while boosting your existing wax—giving you that “just waxed” look and feel. Powerful, super-sudsy, biodegradable and pH balanced, this wash & wax has it all, making the perfect addition to a well-maintained finish. Featuring an environmentally friendly formula and quick rinse, you'll be left with a spot-free brilliantly shining finish.



CALIFORNIA GOLD® CAR WASH

#05600, 16 oz. / #05632, 32 oz. / #05664, 64 oz.

We created Car Wash with a careful balance of powerful cleaning and exacting care. Now you can wash your car thoroughly while protecting your wax. It's not just about bubbles—various dishwashing liquids and “soaps” can harm your wax. Our Car Wash is strong enough to wash away dirt, road film, bugs, bird droppings, airborne pollutants and other grime, without removing wax or dulling the paint. Mothers® pH balanced, super-sudsy cleaner also resists water spotting.

CALIFORNIA GOLD® CLAY BAR SYSTEM

#07240, includes: two 80 gram Clay Bars, 16 oz. Showtime® Instant Detailer, 15" x 15" Microfiber Towel

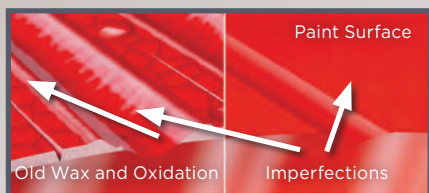
You've heard about clay bars—professional detailers, body men and your car buddies all talk about how well they work. Now use the clay bar everybody wants. Created to remove the particulate debris and contaminants that washing and polishing can't, our exclusive Clay Bar System will remove embedded grains of metal, tree sap, airborne environmental deposits and paint overspray. Better yet, our clay bar isn't hazardous to your paint—it's just firm enough to pick up the bad stuff, without being too aggressive. Use Mothers® Clay Bar to get rid of paint fouling grime and pave the way for complete waxing.





Instead of an all-in-one product trying to do multiple jobs, Mothers® has engineered three individual products to address three distinct facets of paint care. With the Ultimate Wax System® you decide what your paint needs—and when it needs it. Does your paint have minor oxidation, scratches and imperfections? Pure Polish is the perfect surface prep treatment. Need extra depth and luster? Micro-Polishing Glaze is formulated to give your vehicle that elusive, show-quality “wet look.” Want to wax without polishing? Pure Brazilian Carnauba Wax is pristine and pure, with no added polishes or cleaners. Best yet, Mothers® Ultimate Wax System® is absolutely safe for all paints, including clearcoats.

Step 1

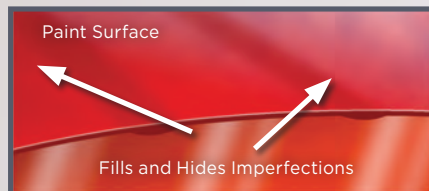


CALIFORNIA GOLD® PURE POLISH

#07100, 16 oz. Liquid

This is the foundation of the Ultimate Wax System®, preparing your paint for Micro-Polishing Glaze and Pure Brazilian Carnauba Wax. Pure Polish removes oxidation, old wax buildup and other contaminants, cleaning and shining your paint. This mild polish smooths the edges of larger imperfections and removes small scratches. Your paint's appearance is dependent on a good polishing—Mothers® Pure Polish should be used at least once or twice per year.

Step 2

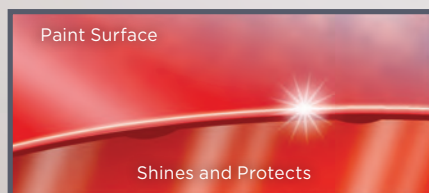


CALIFORNIA GOLD® MICRO-POLISHING GLAZE

#08100, 16 oz. Liquid

Regular application of Mothers® Micro-Polishing Glaze will increase your paint's depth and luster. Whatever the color, it will give your paint added character and a brilliant, glowing shine. Micro-Polishing Glaze fills and hides minor swirls and defects, minimizing unsightly visual imperfections. It also contains a super-fine polish that further improves the paint surface. Micro-Polishing Glaze is key to giving both light and dark colors their perfect finish.

Step 3



CALIFORNIA GOLD® PURE BRAZILIAN CARNAUBA WAX

#05750, 16 oz. Liquid / #05550, 12 oz. Paste

This is the final step on the path to a beautiful finish. Mothers® Pure Brazilian Carnauba Wax is made with the finest Brazilian #1 yellow carnauba for superior shine and protection. It is non-abrasive, so use it as often as you like. You can also apply more than one coat to keep your efforts well protected. For unsurpassed shine, depth and protection, trust Mothers® Ultimate Wax System®.

Clearcoat/Paint Cross Section

CALIFORNIA GOLD® BRAZILIAN CARNAUBA CLEANER WAX

#05701, 16 oz. Liquid / #05500, 12 oz. Paste

Mothers® Brazilian Carnauba Cleaner Wax is designed to be the one-step plan for paint preservation. Cleaner Wax is formulated to clean and protect in just one application. We use the same Brazilian #1 yellow carnauba that makes our Pure Brazilian Carnauba Wax so special, and combine it with a light polish that will smooth minor flaws and make your paint snap. Brazilian Carnauba Cleaner Wax is especially effective on fiberglass and gel coats. Available in long lasting, easy-to-apply liquid or paste.



CALIFORNIA GOLD® SYNTHETIC WAX

#05716, 16 oz.

Mothers® Synthetic Wax provides unparalleled depth, shine and protection in an easy-to-apply, effortless-to-remove formula. Our specially formulated microencapsulated polymers form a chemical bond to protect your paint's surface, while ultra-fine polishes bring out the gloss and luster you've come to expect from Mothers®.



CALIFORNIA GOLD® SPRAY WAX

#05724, 24 oz.

Mothers® Spray Wax is the quick and easy way to clean, shine and protect any automotive paint, including clearcoat. Spray Wax removes surface dust and fingerprints, while adding long-lasting shine, luster and depth. Used on a wet or dry surface, Spray Wax works as a booster over your existing wax, or as a stand-alone product. Simply spray, wipe and buff to a brilliant shine!



CALIFORNIA GOLD® SHOWTIME® INSTANT DETAILER

#08216, 16 oz. / #08224, 24 oz.

Treat your paint to a Showtime® sparkle that's wet and striking. Whether you want to clear a layer of dust or prepare for the judges, use Showtime® Instant Detailer. Its unique formula will clean off fingerprints, smudges and dust, and hide minor imperfections and spider-webbing. Showtime® is designed with color enhancers and shine fortifiers, ready whenever you need your ride to look freshly detailed.





CALIFORNIA GOLD® SCRATCH REMOVER

#08408, 8 oz.

There are areas of your paint's finish that see more abuse than others: on the edges of doors and the trunk lid, around the door handles, keyholes, at the hood latch, etc. What you need is a scratch remover. Mothers® Scratch Remover works on any sort of finish to help restore high mileage paint and remove surface scratches. This is a true polish—be sure to chase it with the standard regimen of waxing to properly seal and protect.



CALIFORNIA GOLD® WATER SPOT REMOVER FOR GLASS

#06712, 12 oz.

Removes stubborn hard water spots and stains from any exterior glass surface. Powerful mineral-dissolving agents scrub away sun-baked sediments, salt spray, tree sap, road grime, bugs and paint overspray. Mothers® Water Spot Remover is for exterior glass windshields, windows and mirrors.



CALIFORNIA GOLD® CHROME POLISH

#05212, 12 oz.

Thick, rich and easy-to-use, Mothers® Chrome Polish gently deep cleans and brightens chrome bumpers, wheels, trim and accessories. Advanced polymers help protect against fingerprints, spotting, rust and corrosion. Chrome Polish safely cleans and protects glass and mirrors and will not streak, scratch or smear.



CALIFORNIA GOLD® METAL POLISH

#05112, 12 oz.

Gently cleans, restores and protects any polishable, bare metal surface to its original high-gloss shine and brilliance using specially formulated polishes and emollients. Metal Polish is safe for uncoated metals including aluminum, billet, stainless steel, nickel, brass, silver and copper. Use by hand, or with any of the metal polishing tools from the Mothers® PowerBall® line.

POWERBALL 4LIGHTS® HEADLIGHT RESTORATION KIT

#07250, includes:

Polishing Tool, 8 oz. PowerPlastic 4Lights®,
two Restoration Pads, 15" x 15" Microfiber Towel

Designed to quickly and safely restore, maintain and protect all types of smooth, shiny plastic and acrylic headlights to crystal clarity. It easily cleans away yellowing and stains, and even buffs out unsightly hairline scratches, smudges, and flaws in a single step. The included PowerPlastic 4Lights® Polish restores crystal clarity, leaving a tough protective oxidation inhibiting polymer layer to guard against future degradation from the elements.



POWERPLASTIC 4LIGHTS®

#08808, 8 oz.

Mothers® PowerPlastic 4Lights® is specifically formulated for use by hand or with our PowerBall 4Lights® polishing tool. It allows you to quickly and easily polish and protect a wide variety of hard or flexible clear plastics in one simple step. It features a special blend of oxidation inhibiting polymers, UV shields and an ultra-fine polish that work in unison to clean and clarify your headlights, taillights, convertible top windows and more.



Power Products



POWERBALL®

#05140, Polishing Tool

The Mothers® PowerBall® is the original foam polishing tool designed to revitalize billet, diamond plate, polished aluminum and stainless steel. Ideal for use with our aluminum, billet and chrome polishes. Its unique and durable construction compresses to fit tight spaces, so polishing difficult, intricate metalwork to a mirror-like finish is fast and easy.



POWERBALL MINI®

#05141, Polishing Tool with 10" Extension

The PowerBall Mini® takes your intricate, hard to reach, tedious polishing jobs and makes them easy. It retains the signature speed, ruggedness, and versatility of the PowerBall®, while adding reach and pinpoint accuracy for those knuckle-busting jobs. It's perfect for polishing wheels, diamond plate, engine components, and much more.



POWERCONE®

#05146, Polishing Tool

The PowerCone® expands our PowerBall® line to offer the widest range of polishing possibilities. It makes quick work of any uncoated, polishable metal finish, no matter how intricate the design. Its ingenious conical shape provides an infinite range of sizes—ideal for getting into tight, difficult-to-reach areas. And the cone's long, tapered side is perfect for polishing broad, curved surfaces. Combined with your favorite Mothers® metal polish, the PowerCone® gives you a deep, mirror-like shine in less time.

POWERBALL MINI MD®

#05142, Polishing Tool with 10" Extension

Our first ever specialty tool in the PowerBall® family. The PowerBall Mini MD® (Metal Doctor) makes costly wheel repairs a thing of the past. It allows you to safely and easily remove tough scratches and stains from your polished aluminum and stainless steel parts with speed and confidence. Designed specifically for use with Mothers® PowerMetal® Scratch Removing Polish.



POWERMETAL® SCRATCH REMOVING POLISH

#05150, 10 oz.

Designed specifically for use with the Mothers® PowerBall Mini MD®, PowerMetal® Scratch Removing Polish has just the right amount of complex chemistry and compounds to get the job done fast and easy. Removes sanding scratches, heavy oxidation, stains and water spots.

When it comes to taking care of your car, detailing involves much more than merely paint, interior, tires and wheels. Enter Mothers® Special Care—an integral part of the Mothers® line, these products are definitely worth their weight in gold.

R3 - RACING RUBBER REMOVER

#09224, 24 oz.

Mothers® R3 is a spray on, wipe off cleaner, formulated to quickly and safely remove rubber scuffmarks, dirt, soil and grime from paint, glass, vinyl wrap and just about any other exterior surface. Modern chemistry ensures that R3 is tough on tenacious rubber and grime, but gentle and safe for surrounding surfaces.



GLASS CLEANER

#06616, 16 oz. / #06624, 24 oz.

Road film, oily deposits and grime don't stand a chance against Mothers® Glass Cleaner. Great on all automotive glass, headlight lenses, mirrors and even chrome, this glass cleaner doesn't leave streaks. Our professional strength formula is safe and ammonia free, so it won't harm your tinted window film.



BACK-TO-BLACK® TRIM CARE

#06108, 8 oz.

As your ride's exterior ages, rubber, plastic and vinyl of all colors will dry, crack, flake and deteriorate. This oxidation can be stopped and reversed with Mothers® Back-to-Black® Trim Care, our favorite auto care concoction. This trim treatment is great for bumpers, moldings, louvers, window trim, vents, seals, skirts, door handles, wiper arms—anything that's uncoated plastic, rubber or vinyl. Apply Back-to-Black® to sunburnt plastic, rubber and vinyl to revive the factory-new sheen, and then re-treat regularly.



PLASTIC POLISH

#06208, 8 oz.

Mothers® Plastic Polish will clean, shine and protect with crystal clarity. This is a genuine polish for buffing out hairline scratches, smudges, oxidation, flaws and little nicks, as well as cleaning away stains and yellowing from your plastic convertible top window. Mothers® Plastic Polish doesn't stop there—it protects your plastics from the sun, smog, water stains and airborne contaminants with a tough layer of polymers.

The road is not a forgiving place, so the best strategy for keeping your wheels looking great is regular maintenance with Mothers® premium wheel and tire care products.



POLISHED ALUMINUM WHEEL CLEANER

#06024, 24 oz.

Mothers® Aluminum Wheel Cleaner is formulated to safely and easily clean uncoated polished aluminum and anodized wheels. Gentle, yet effective, Aluminum Wheel Cleaner doesn't just stop at aluminum. It also works great on painted, clearcoated, color coated, chrome, custom, or factory coated wheels and hubcaps. Its spray on, hose off design safely penetrates, dissolves and suspends all types of brake dust, grease, dirt, and grime, making rinsing a snap.



PRO-STRENGTH CHROME WHEEL CLEANER

#05824, 24 oz.

Mothers® Chrome Wheel Cleaner is specially formulated to quickly and easily clean chrome wire wheels, chrome plated wheels, chrome wire hubcaps and rough cast aluminum "mag" wheels. Its spray on, hose off design safely penetrates, dissolves and suspends all types of brake dust, grease, dirt, and grime, making rinsing a snap.



FOAMING WHEEL & TIRE CLEANER

#05924, 24 oz.

Mothers® Wheel & Tire Cleaner is a foaming, non-acidic spray, formulated to quickly and easily clean both wheels and tires, including blackwalls and whitewalls. Safe for original equipment wheels and hubcaps, including clearcoated, painted, chrome and PVD. Its spray on, hose off design safely penetrates, dissolves and suspends all types of brake dust, grease, dirt, and grime, making rinsing a snap. Its unique spot-free rinse leaves wheels perfectly clean, with no need to hand dry.

BACK-TO-BLACK® TIRE SHINE

#06924, 24 oz.

With Mothers® Back-to-Black® Tire Shine, it's no longer necessary to suffer the tradeoff of durability and protection to keep a show quality shine. Formulated using the same industry proven Back-to-Black® surface care technology you have come to know and trust, Back-to-Black® Tire Shine provides a high-gloss, long lasting, protective barrier to keep your tires looking blacker, longer.



WARNING: For use on factory/OEM coated wheels and hubcaps only. Avoid polished or roughcast aluminum, billet or anodized wheels. Do not use on motorcycle wheels, casings or components.





MAG & ALUMINUM POLISH

#05100, 5 oz. / #05101, 10 oz.

This is our legendary metal polish. Mothers® secret formula balances a brilliant shine with ease-of-use for aluminum wheels and parts, brass, alloys and accessories. Application is just a matter of a clean cloth and a little elbow grease. Mag & Aluminum Polish is strong enough to put a shine to the most neglected metals, and gentle enough to use on a regular basis.

BILLET METAL POLISH

#05106, 4 oz.

Mothers® Billet Metal Polish takes our world famous metal polish technology to a whole new level. State-of-the-art cleaners and cutting-edge formulation give your billet, forged and finely cast aluminum, brass and other polishable metals the absolute finest finish available—guaranteed. If you've spent big bucks on quality metal accessories, step up to a polish worthy of your investment.



Ground-in dirt, relentless UV rays, grimy smudges and fingerprints. The typical automotive interior endures abuse on a daily basis. That's why regular maintenance and protection with Mothers® is essential to the longevity of your car's interior.



VLR - VINYL • LEATHER • RUBBER CARE

#06524, 24 oz.

Mothers® VLR quickly and easily cleans, conditions and protects a wide variety of vinyl, leather and rubber surfaces. This pro-strength, pH balanced formula safely cleans even the most stubborn ground-in dirt, soil and stains. Infused with neatsfoot oil and lanolin, this all-in-one blend conditions and protects against drying, fading and cracking, in one simple step.

LEATHER CLEANER

#06412, 12 oz.

The perfect finished leather cleaner. High-traffic leather interiors, convertibles with leather and essentially every other leather should be bathed regularly—it's a natural skin and needs care. Our chemists created Mothers® Leather Cleaner, a pH balanced formula that safely lifts impregnated dirt, grime and stains from your precious leather interior. Meanwhile, when you use our Leather Cleaner, you're preparing that material for Mothers® Leather Conditioner, which will ensure a long, supple life.



LEATHER CONDITIONER

#06312, 12 oz.

Our Leather Conditioner will preserve your finished leather. You've cleaned it, rubbed out coffee stains, food spills and the dirt on the side bolsters, and you don't want to leave that freshly cleansed skin open to new indiscretion. Seal it with Mothers® Leather Conditioner. Our Leather Conditioner is formulated with lanolin and neatsfoot oil to preserve the natural oils lost with age. It leaves a protective barrier that helps seal out the detrimental effects of the sun, time and daily abuse.

PROTECTANT

#05316, 16 oz. / #05324, 24 oz.

Preserves and protects for 30 days! Mothers® Protectant is a penetrating UV blocker, effective on rubber, vinyl, plastic and fiberglass. Constructed to recondition and maintain the original condition and appearance of dashboards, bumpers, trim, tires and more. Protectant isn't an oily surface-coating film. It's an ozone and smog resisting, UV shielding penetrant—a preservation agent that works on just about any uncoated plastic, rubber or vinyl.



CARPET & UPHOLSTERY

#05424, 24 oz.

You've never seen your carpet so clean. Use of Mothers® Carpet & Upholstery all fabric cleaner is an eye-opening affair, revealing the true color and character of your interior. Our Carpet & Upholstery cleaner is tough enough to pull out the stubborn stains and marks that mar your vinyl, velour, cloth, carpet and sheepskin, while being pH balanced and environmentally safe. Not just for cars, Carpet & Upholstery works on stains in the home too, and the big 24 oz. trigger spray bottle gives you plenty for all those jobs.





Mothers® has engineered the FX line to be the most sophisticated, state of the art products available today.



FX SPRAY WAX

#20224, 24 oz.

Advanced technology designed for today's paints. Simply mist it on clean paint (wet or dry), spread evenly, then buff to a brilliant shine. It's that easy! Thanks to high-tech chemistry, Mothers FX® Spray Wax can be used as a booster over your existing wax, as a stand-alone product or to maintain high-use areas of your vehicle.



FX TIRE SHINE

#20324, 24 oz.

Our exclusive high-gloss, state-of-the-art tire surface care technology keeps today's sidewalls protected and looking great. Custom crafted polymers and advanced coating agents bond with the tire's surface, shielding it from UV oxidation, brake dust and road grime. Mothers FX® Tire Shine gives your tires that "just dressed" finish that won't brown or sling.



FX WHEEL & TIRE CLEANER

#20524, 24 oz.

Cutting-edge technology designed to keep today's wheels and tires looking great. Brake dust and road grime are a thing of the past with this safe, powerful, fast acting, non-acidic foaming cleaner. Its unique spray on, hose off, and let dry design leaves your wheels and tires looking their absolute best. Safe for original equipment wheels and hubcaps, including clearcoated, painted, chrome and PVD.

WARNING: For use on factory/OEM coated wheels and hubcaps only. Avoid polished or roughcast aluminum, billet or anodized wheels. Do not use on motorcycle wheels, casings or components.



FX SYNWAX®

#20011, 11 oz. Paste / #20016, 16 oz. Liquid

Now you can get that great Mothers® paste wax shine in an easy to use pre-softened synthetic formula. Mothers FX® SynWax® is designed to give your paint uncompromising protection while providing unequalled shine and ease of use. Our engineered encapsulation process allows for effortless application, so the wax spreads quickly and easily. Removal is a breeze, leaving behind super-tough synthetic polymers that bond to your paint's surface. Mothers FX® SynWax® advanced technology provides depth, richness, and superior protection against harmful UV damage and other environmental threats.

Reflections®

A refined blend of high-tech and high-class, Mothers® Reflections® is for discerning automotive enthusiasts.



REFLECTIONS® CAR WAX

#10016, 16 oz.

The latest generation in clearcoat safe paint care technology. Mothers® Reflections® Car Wax is so incredible, we guarantee it to be the best you have ever used. Advancements in liquid polymer technologies allow us to carefully blend mild cleaners with high-gloss polymers. Our product is easy to use & provides a stunning, super wet, long lasting protective shine. Use it as a stand-alone product, or for optimal results, follow with Reflections® Top Coat.

REFLECTIONS® TOP COAT

#10116, 16 oz.

Reflections® Top Coat is designed as the quintessential high-gloss final step. Top Coat has no cleaners, and is clearcoat safe—so it can be used on top of any car wax, sealant or glaze—and is ideal for use after Reflections® Car Wax. The combination of natural waxes and synthetic polymers gives your paint additional gloss, depth and superior protection.

REFLECTIONS® SPRAY WAX

#10224, 24 oz.

The quick and easy way to add shine and protection. Used on a wet or dry surface, Reflections® Spray Wax is clearcoat safe, and works as a stand-alone product, a booster over existing wax, or as a touch-up on high-use areas.

REFLECTIONS® TIRE CARE

#10324, 24 oz.

Reflections® Tire Care provides a rich, satin-like, non-oily finish that is show car perfect. Our unique formula protects against harsh elements, brake dust and UV damage, yet makes your tires look like new for weeks and weeks.

REFLECTIONS® LEATHER CARE

#10424, 24 oz.

The fast, simple, easy way to pamper your car's leather. Reflections® Leather Care's unique pH balanced, neatsfoot oil and lanolin formula, safely deep cleans and conditions, leaving behind a soft, supple leather surface.





5456 Industrial Drive, Huntington Beach, California 92649-1519
714.891.3364 • fax 714.893.1827

MOTHERS.COM • DETAILGUIDE.COM • WAXFORUM.COM

 [FACEBOOK.COM/MOTHERSUSA](https://www.facebook.com/MOTHERSUSA)

©2013 MOTHERS® • POLISHES • WAXES • CLEANERS, INC.

