

ARK TRAILER ACCESSORIES

CODE NO.	DESCRIPTION
511221	4 1/2" KEEL ROLLER BLACK RUBBER
511231	6" KEEL ROLLER BLACK RUBBER
511241	8" KEEL ROLLER BLACK RUBBER
511251	4 1/2" FLAT ROLLER BLACK RUBBER
511301	6" SYDNEY ROLLER BLACK RUBBER
512211	4" POLYU KEEL BLUE ROLLER HARD
512221	4 1/2" POLYU KEEL BLUE ROLLER
512231	6" KEEL BLUE ROLLER
512241	8" KEEL BLUE ROLLER
513211	4" RED SOFT KEEL ROLLER
513221	4 1/2" POLYU KEEL RED ROLLER
513231	6" KEEL RED POLY ROLLER
513233	6" POLYU SYDNEY RED ROLLER
513236	6" POLYU SELF CENTERING RED
513241	8" KEEL RED POLY 17MM
513246	8" POLYU SELF CENTERING RED
515411	4" SMOOTH BLUE WOB POLY
515431	4" SMOOTH BLACK WOB POLY
515510	1.5M BLUE TRAILER STRIP
515540	RUBBER "V" BLOCK
515548	POLY "V" WEDGE 90MM RED
516110	SINGLE WOBBLE BRACKET 18MM, GALVANISED
516112	DOUBLE WOBBLE ROLLER BRACKET 18MM, GALVANISED
516114	HEAVY DUTY DOUBLE WOBBLE BRACKET 22MM, BIG CLAMP, GALVANISED
516120	4" FLAT BRACKET, 16MM BORE GALVANISED
516122	4 1/2" FLAT BRACKET, 16MM BORE GALVANISED
516123	6" FLAT BRACKET, 16MM BORE, GALVANISED
516124	8" FLAT BRACKET, 16MM BORE GALVANISED
516128	4" STEM BRACKET, 6" X 20MM SQUARE STEM, GALVANISED
516130	4 1/2" STEM BRACKET, 6" X 18MM SQUARE STEM, GALVANISED
516132	6" STEM BRACKET, 6" X 20MM SQUARE STEM, GALVANISED
516138	8" FLAT TWIN STEM BRACKET, 6" X 20MM SQUARE STEMS, GALVANISED
516150	8" WOOD YOKE - STRAIGHT 20MM STEM SIZE, GALVANISED
516151	8" WOOD YOKE - ANGLED 20MM STEM SIZE, GALVANISED
516152	3" WELD ON BRACKET, 75MM LENGTH, ZINC PLATED, INCLUDES BOLT
516154	3" BOLT ON BRACKET, 75MM LENGTH, ZINC PLATED, INCLUDES BOLT
516191	145MM X 16MM ROLLER SPINDLE, ZINC PLATED SUITS 4 1/2" FLAT BRACKET
516192	203MM X 16MM ROLLER SPINDLE, ZINC PLATED SUITS 6" FLAT BRACKET
516193	235MM X 16MM ROLLER SPINDLE, ZINC PLATED, SUITS 8" FLAT BRACKET
516196	8" EYE POST, 5/8" + 8" 20MM SQUARE STEM, GALVANISED
516202	MOTOR SUPPORT BRACKET
516212	TWIN WOBBLE ASSEMBLY
516222	4 1/2" KEEL ASSEMBLY - FLAT BRACKET
516230	4 1/2" KEEL ROLLER ASSEMBLY - STEM BRACKET
4320010	ELECTRIC BREAK-AWAY SWITCH (EBS24)
4320099	BREAK-AWAY KIT WITH LED'S & CHARGER (EBK24)
4320400	BREAK-AWAY KIT WITH LED'S & CHARGER, SIDEMOUNT (EBK24S)
4347225	BRAKE-FORCE, LED BRAKE CONTROL (EBC24BF)
4347235	IMPULSE DIGITAL BRAKE CONTROL (EBC24-I)



33 - 2

ARK TRAILER ACCESSORIES



CODE NO.	DESCRIPTION
51710B	7 CORE TRAILER CABLE X 10 METRES IN BLISTER PACK
51710TB	7 CORE TRAILER CABLE X 10M with TINNED WIRES IN BLISTER PACK
517LS25LP	CONNECTS 7 PIN LARGE ROUND SOCKET ON CAR TO 5 PIN LARGE ROUND PLUG ON TRAILER IN BLISTER PACK
517LS26P	CONNECTS 7 PIN LARGE ROUND SOCKET ON CAR TO 6 PIN SMALL ROUND PLUG ON TRAILER IN BLISTER PACK
517LS27P	CONNECTS 7 PIN LARGE ROUND SOCKET ON CAR TO 7 PIN SMALL ROUND PLUG ON TRAILER IN BLISTER PACK
517LS2FP	CONNECTS 7 PIN LARGE ROUND SOCKET ON CAR TO 7 PIN FLAT PLUG ON TRAILER IN BLISTER PACK
517S26P	CONNECTS 7 PIN SMALL ROUND SOCKET ON CAR TO 6 PIN SMALL ROUND PLUG ON TRAILER IN BLISTER PACK
517S27LP	CONNECTS 7 PIN SMALL ROUND SOCKET ON CAR TO 7 PIN LARGE ROUND PLUG ON TRAILER IN BLISTER PACK
517S2FP	CONNECTS 7 PIN SMALL ROUND SOCKET ON CAR TO 7 PIN FLAT PLUG ON TRAILER IN BLISTER PACK
51A4077FH	40MM SQUARE 77" LONG PRE-ASSEMBLED AXLE WITH FORD DISC HUBS, MECHANICAL CALIPERS AND MOUNTING PLATES
51A4079CD	40MM SQUARE 79" LONG PRE-ASSEMBLED AXLE WITH COMMODORE DISC HUBS, MECHANICAL CALIPERS AND MOUNTING PLATES
51A4079FH	40MM SQUARE 79" LONG PRE-ASSEMBLED AXLE WITH FORD DISC HUBS, MECHANICAL CALIPERS AND MOUNTING PLATES
51A4097CD	40MM SQUARE 97" LONG PRE-ASSEMBLED AXLE WITH COMMODORE DISC HUBS, MECHANICAL CALIPERS AND MOUNTING PLATES
51A4097FH	40MM SQUARE 97" LONG PRE-ASSEMBLED AXLE WITH FORD DISC HUBS, MECHANICAL CALIPERS AND MOUNTING PLATES
51A4578FD	45MM SQUARE 78" LONG PRE-ASSEMBLED AXLE WITH FORD DISC HUBS, MECHANICAL CALIPERS AND MOUNTING PLATES
51A4597FD	45MM SQUARE 97" LONG PRE-ASSEMBLED AXLE WITH FORD DISC HUBS, MECHANICAL CALIPERS AND MOUNTING PLATES
51A632	1000KG STAR NUT TRAILER COUPLING
51A760	3000KG 75MM FIXED RING COUPLING
51A788	2000KG WELD-ON COUPLING WITH ADJUSTABLE SCREW
51A790	2000KG 75MM RING OVER-RIDE COUPLING WITH REVERSING LOCK
51A790HBP	LIMITED SWIVEL BASE PLATE TO SUIT HYDRAULIC OVER-RIDE A790 COUPLING
51A790MBP	LIMITED SWIVEL BASE PLATE TO SUIT MECHANICAL OVER-RIDE A790 COUPLING

ARK TRAILER ACCESSORIES

[illegible]

ARK TRAILER ACCESSORIES

[illegible]

ARK TRAILER ACCESSORIES

[illegible]

ARK TRAILER ACCESSORIES

[illegible]

ARK TRAILER ACCESSORIES



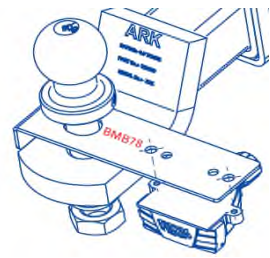
CODE NO.	DESCRIPTION
45mm AXLES	
51AXS4561	AXLE (SOLID) 45MM SQUARE X 61" (154.9CM), COMPLETE
51AXS4564	AXLE (SOLID) 45MM SQUARE X 64" (162.5CM), COMPLETE
51AXS4565	AXLE (SOLID) 45MM SQUARE X 65" (165.1CM), COMPLETE
51AXS4566	AXLE (SOLID) 45MM SQUARE X 66" (167.6CM), COMPLETE
51AXS4567	AXLE (SOLID) 45MM SQUARE X 67" (170CM), COMPLETE
51AXS4571	AXLE (SOLID) 45MM SQUARE X 71" (180CM), COMPLETE
51AXS4572	AXLE (SOLID) 45MM SQUARE X 72" (183CM), COMPLETE
51AXS4575	AXLE (SOLID) 45MM SQUARE X 75" (190CM), COMPLETE
51AXS4576	AXLE (SOLID) 45MM SQUARE X 76" (193CM), COMPLETE
51AXS4577	AXLE (SOLID) 45MM SQUARE X 77" (195.5CM), COMPLETE
51AXS4578	AXLE (SOLID) 45MM SQUARE X 78" (198CM), COMPLETE
51AXS4579	AXLE (SOLID) 45MM SQUARE X 79" (200CM), COMPLETE
51AXS4579G	AXLE (SOLID) GALVANISED 45MM SQUARE X 79" (200CM), COMPLETE
51AXS4580G	AXLE (SOLID) GALVANISED 45MM SQUARE X 80" (203.2CM), COMPLETE
51AXS4581G	AXLE (SOLID) GALVANISED 45MM SQUARE X 81" (205.7CM), COMPLETE
51AXS4582G	AXLE (SOLID) GALVANISED 45MM SQUARE X 82" (208.2CM), COMPLETE
51AXS4583G	AXLE (SOLID) GALVANISED 45MM SQUARE X 83" (210.8CM), COMPLETE
51AXS4585	AXLE (SOLID) 45MM SQUARE X 85" (215.9CM), COMPLETE
51AXS4585G	AXLE (SOLID) GALVANISED 45MM SQUARE X 85" (215.9CM), COMPLETE
51AXS4589	AXLE (SOLID) 45MM SQUARE X 89" (226CM), COMPLETE
51AXS4589G	AXLE (SOLID) GALVANISED 45MM SQUARE X 89" (226CM), COMPLETE
51AXS4590	AXLE (SOLID) GALVANISED 45MM SQUARE X 90" (228.6CM), COMPLETE
51AXS4591	AXLE (SOLID) 45MM SQUARE X 91" (231.1CM), COMPLETE
51AXS4591G	AXLE (SOLID) GALVANISED 45MM SQUARE X 91" (231.1CM), COMPLETE
51AXS4592G	AXLE (SOLID) GALVANISED 45MM SQUARE X 92" (233.6CM), COMPLETE
51AXS4593	AXLE (SOLID) 45MM SQUARE X 93" (236CM), COMPLETE
51AXS4595	AXLE (SOLID) 45MM SQUARE X 95" (241.3CM), COMPLETE
51AXS4597	AXLE (SOLID) 45MM SQUARE X 97" (246.38CM), COMPLETE
50mm AXLES	
51AXS5071D	AXLE (SOLID) 50MM SQUARE X 71" (180CM), COMPLETE
51AXS5071GD	AXLE (SOLID) GALVANISED 50MM SQUARE X 71" (180CM), COMPLETE
51AXS5074D	AXLE (SOLID) 50MM SQUARE X 74" (187.9CM), COMPLETE
51AXS5074GD	AXLE (SOLID) GALVANISED 50MM SQUARE X 74" (187.9CM), COMPLETE
51AXS5076D	AXLE (SOLID) 50MM SQUARE X 76" (193CM), COMPLETE
51AXS5076GD	AXLE (SOLID) GALVANISED 50MM SQUARE X 76" (193CM), COMPLETE
51AXS5079D	AXLE (SOLID) 50MM SQUARE X 79" (200CM), COMPLETE
51AXS4579GD	AXLE (SOLID) GALVANISED 50MM SQUARE X 79" (200CM), COMPLETE
51AXS5087D	AXLE (SOLID) 50MM SQUARE X 87" (220.9CM), COMPLETE
51AXS5087GD	AXLE (SOLID) GALVANISED 50MM SQUARE X 87" (220.9CM), COMPLETE
51AXS5090D	AXLE (SOLID) 50MM SQUARE X 90" (228.6CM), COMPLETE
51AXS5090GD	AXLE (SOLID) GALVANISED 50MM SQUARE X 90" (228.6CM), COMPLETE
51AXS5095D	AXLE (SOLID) 50MM SQUARE X 95" (241.3CM), COMPLETE
51AXS5095GD	AXLE (SOLID) GALVANISED 50MM SQUARE X 95" (241.3CM), COMPLETE

ARK TRAILER ACCESSORIES



CODE NO.	DESCRIPTION
51B250	2.5MM WIRE CLIPS (12) IN BLISTER PACK
51B360	FLAT MOUNTING BRACKET SUITABLE FOR SMALL ROUND PLASTIC SOCKET IN BLISTER PACK
51B90	ANGLE MOUNTING BRACKET SUITABLE FOR SMALL ROUND PLASTIC SOCKET IN BLISTER PACK
51BATSTRAP	BATTERY BOX STRAP, BULK
51BB27	STANDARD BATTERY BOX - INTERNAL SIZE W180 X L275 X H200MM - WITH STRAP, BULK
51BB32	LARGE BATTERY BOX - INTERNAL SIZE W185 X L325 X H200MM - WITH STRAP, BULK
51BCA100G	BRAKE ARM GALVANISED - TO SUIT MECHANICAL BRAKE CALIPER, SPARE PART
51BCB1150	BRAKE CALLIPER MOUNTING BOLT
51BCB50	TOWBALL KIT 3.5T BLACK BALL AND COVER
51BCC04B	4 X 4MM GALVANISED PLATED BRAKE CABLE CLAMPS - BLISTER
51BCC04G	4MM GALVANISED BRAKE CABLE CLAMP
51BCC05G	5MM GALVANISED BRAKE CABLE CLAMP
51BCC4	BRAKE CABLE 4MM, 7X7 GALVANISED - 500M ROLL
51BCC4B	BRAKE CABLE 8M X 4MM, 7X7 GALVANISED WIRE CABLE WITH 4 X 4MM CLAMPS, BLISTER.
51BCCB4	BRAKE CABLE 4MM, 7X7 GALVANISED WITH BLUE PVC COATING - 500M ROLL
51BCH100G	BRAKE HAMMER GALVANISED - TO SUIT MECHANICAL BRAKE CALIPER, SPARE PART
51BCS16	BRAKE CALIPER SPRING, SPARE PART
51BCS50	TOWBALL KIT: 3.5T.- 50MM CHROME TOWBALL, SHIN PROTECTOR & TOWBALL COVER IN BLISTER PACK
51BK32	TRAILER BEARING KIT - HOLDEN - IN BLISTER PACK
51BK35	TRAILER BEARING KIT - FORD - IN BLISTER PACK
51BMB78	BALL MOUNT BRACKET - SECURES TO BALL MOUNT BY TOW BALL
51BR100G	GALVANIZED OVER-RIDE COUPLING BRAKE ARM SUITS 100 X 100MM DRAWBARS
51BR50G	GALVANIZED OVER-RIDE COUPLING BRAKE ARM SUITS 50MM X 75MM & 50MM X 100MM DRAWBARS
51BR75G	GALVANIZED OVER-RIDE COUPLING BRAKE ARM SUITS 75MM X 75MM & 75MM X 100MM DRAWBARS
51BR75H	OVER-RIDE COUPLING BRAKE ARM-BLUE HANDLE
51BS32	HOLDEN TYPE BEARING SEAL - BULK PACK
51BS35	FORD TYPE BEARING SEAL - BULK PACK
51BS7	7 PIN LARGE ROUND BOOT SOCKET IN POLY BAG
51BSF7	7 PIN FLAT BOOT SOCKET X 1.4 FLAT CABLE & 7 CLIPS IN POLY BAG

ARK TRAILER ACCESSORIES

[illegible]

ARK TRAILER ACCESSORIES

[illegible]

ARK TRAILER ACCESSORIES



CODE NO.	DESCRIPTION
51CMB141	COUPLING MOUNTING BOLTS, 4" X 1/2" - BULK
51CMB151	COUPLING MOUNTING BOLTS, 1 1/2" X 1/2"
51CMB152B	COUPLING MOUNTING BOLTS, 2 X 1 1/2" X 1/2" - SUITS 2 HOLE COUPLING - BLISTER
51CMB153B	COUPLING MOUNTING BOLTS, 3 X 1 1/2" X 1/2" - SUITS 3 HOLE COUPLING - BLISTER
51CMB41	COUPLING MOUNTING BOLTS, 4" X 1/2"
51CMB44B	COUPLING MOUNTING BOLTS, 4" X 1/2" - BLISTER
51CPL10	TRAILER COUPLING LOCK, BULK
51CR2070	USE CR2285
51CR2285	CLEAR SELF ADHESIVE REFLECTOR - ADR APPROVED - 22MM X 85MM, BULK
51CR2285B	2 X CLEAR SELF ADHESIVE REFLECTORS - ADR APPROVED - IN BLISTER PACK
51CR4060	CLEAR SELF ADHESIVE REFLECTOR - 40MM X 60MM, BULK
51CR4373	CLEAR SELF ADHESIVE REFLECTOR-43X73MM
51CR4373B	2 X CLEAR SELF ADHESIVE REFLECTOR - 43MM X 73MM - BLISTER
51CS500	CORNER STEADY 500mm
51CS700	CORNER STEADY 700mm
51CSC50	COUPLING SAFETY CATCH TO SUIT 50MM BALL COUPLINGS
51CSH55	CORNER STEADY WINDING HANDLE 550mm
51CSH90	CORNER STEADY WINDING HANDLE 900mm
51CWC300D	COMPACT WHEEL CLAMP, YELLOW, WITH ARK LOGO, 2 KEYS AND CARRY BAG IN DISPLAY CARTON
51CWCXOD	OFF ROAD COMPACT WHEEL CLAMP
51DA25	POWERPACK 3 - 12V BATTERY BOX WITH BUILT IN 6-STAGE SMART CHARGER
51DBK40CD	DISC BRAKE KIT TO SUIT COMMODORE W/ HOLDEN BEARINGS
51DBK40FH	DISC BRAKE KIT TO SUIT FORD W/ HOLDEN BEARINGS
51DBK40FHG	DISC BRAKE KIT TO SUIT FORD W/ HOLDEN BEARINGS - GALVANISED
51DBK40HQ	DISC BRAKE KIT TO SUIT HQ HOLDEN W/ HOLDEN BEARINGS
51DBK40HQG	DISC BRAKE KIT TO SUIT HQ HOLDEN W/ HOLDEN BEARINGS - GALVANISED
51DBK40HT	DISC BRAKE KIT TO SUIT HT HOLDEN W/ HOLDEN BEARINGS
51DBK40HTG	DISC BRAKE KIT TO SUIT HT HOLDEN W/ HOLDEN BEARINGS - GALVANISED
51DBK455LF	DISC BRAKE KIT TO SUIT 5 STUD LANDCRUISER W/ FORD BEARINGS
51DBK45FD	DISC BRAKE KIT TO SUIT FORD W/ FORD BEARINGS
51DBK45FDG	DISC BRAKE KIT TO SUIT FORD W/FORD BEARINGS - GALVANISED
51DBK45LF	DISC BRAKE KIT TO SUIT 6 STUD LANDCRUISER W/ FORD BEARINGS
51DBK45LFG	DISC BRAKE KIT TO SUIT 6 STUD LANDCRUISER W/ FORD BEARINGS - GALVANISED

ARK TRAILER ACCESSORIES

[illegible]

ARK TRAILER ACCESSORIES



CODE NO.	DESCRIPTION
51DH12HTD	1/2" DISC HUB TO SUIT HT HOLDEN - HOLDEN BEARINGS, DUST CAP, SEAL & NUTS IN DISPLAY CARTON
51DH12HTF	1/2" DISC HUB - SUITS HT HOLDEN WITH FORD BEARINGS, DUST CAPS, SEAL AND NUTS IN CARTON
51DH12HTFD	1/2" DISC HUB - SUITS HT HOLDEN WITH FORD BEARINGS, DUST CAPS, SEAL AND NUTS IN DISPLAY CARTON
51DH12HTFG	1/2" DISC HUB - GALVANISED - SUITS HT HOLDEN - FORD BEARINGS DUST CAPS, MARINE SEAL AND NUTS
51DH12HTFGD	1/2" DISC HUB - GALV - SUITS HT HOLDEN - FORD BEARINGS DUST CAPS, MARINE SEAL AND NUTS IN DISP. CARTON
51DH12HTG	1/2" DISC HUB - GALVANISED - SUIT HT HOLDEN - HOLDEN BEARINGS, DUST CAP, SEAL & NUTS
51DH585LF	5/8" DISC HUB - SUITS LANDCRUISER - FORD BEARINGS, DUST CAPS, SEAL AND NUTS W/ 5 STUDS IN CARTON
51DH58LF	5/8" DISC HUB - SUITS LANDCRUISER - FORD BEARINGS, DUST CAPS, SEAL AND NUTS IN CARTON
51DH58LFG	5/8" DISC HUB - GALV - SUITS LANDCRUISER - FORD BEARINGS, DUST CAPS, SEAL AND NUTS IN CARTON
51DP1028	DISC PADS (1 PAIR) TO SUIT CALIPER
51DP1028B	DISC PADS (1 PAIR) - TO SUIT CALIPER IN BLISTER
51DP403	3" DROP PLATE SUITS 40MM AXLE
51DP404	4" DROP PLATE SUITS 40MM AXLE
51DP453	3" DROP PLATE SUITS 45MM AXLE
51DP454	4" DROP PLATE SUITS 45MM AXLE
51DP503	3" DROP PLATE SUITS 50MM AXLE
51DP504	4" DROP PLATE SUITS 50MM AXLE
51DRF56B	DYNEEMA ROPE 6M x 4.9mm SNAP HOOK
51DRF675B	DYNEEMA ROPE 7.5M x 6mm SNAP HOOK
51DRS46B	DYNEEMA ROPE 6M x 4mm 'S' HOOK
51DSG06B	DEE SHACKLE - 6mm GALVANISED - IN BLISTER
51DSG08	DEE SHACKLE - 8mm GALVANISED - BULK
51DSG08B	DEE SHACKLE - 8mm GALVANISED - IN BLISTER
51DSG10	DEE SHACKLE - 10mm GALVANISED - BULK
51DSG10B	DEE SHACKLE - 10mm GALVANISED - IN BLISTER
51DSG12	DEE SHACKLE - 12mm GALVANISED - BULK
51DSG12B	DEE SHACKLE - 12mm GALVANISED - IN BLISTER
51DSG16B	DEE SHACKLE - 16mm GALVANISED - IN BLISTER

ARK TRAILER ACCESSORIES



CODE NO.	DESCRIPTION
51DSGR08	D SHACKLE 8mm RATED .75 ton
51DSGR08B	D SHACKLE 8mm RATED .75 ton - IN BLISTER
51DSGR10	D SHACKLE 10mm RATED 1 ton - BULK
51DSGR10B	D SHACKLE 10mm RATED 1 ton - IN BLISTER
51DSGR11	D SHACKLE 11mm RATED 1.5 ton - BULK
51DSGR11B	D SHACKLE 11mm RATED 1.5 ton - IN BLISTER
51DSGR13	D SHACKLE 13mm RATED 2 ton - BULK
51DSGR13B	D SHACKLE 13mm RATED 2 ton - IN BLISTER
51DSS06B	DEE SHACKLE - 6mm STAINLESS STEEL - IN BLISTER
51DSS08B	DEE SHACKLE - 8mm STAINLESS STEEL - IN BLISTER
51DSS10B	DEE SHACKLE - 10mm STAINLESS STEEL - IN BLISTER
51DSS12B	DEE SHACKLE - 12mm STAINLESS STEEL - IN BLISTER
51EBK26	ELECTRIC BREAK-AWAY KIT
51EBK40FH	10" ELECTRIC DRUM BRAKE KIT TO SUIT FORD W/ HOLDEN BEARINGS
51EBK40HQ	10" ELECTRIC DRUM BRAKE KIT TO SUIT HQ HOLDEN W/ HOLDEN BEARINGS
51EBK40HT	10" ELECTRIC DRUM BRAKE KIT TO SUIT HT HOLDEN W/ HOLDEN BEARINGS
51EBK45FD	10" ELECTRIC DRUM BRAKE KIT TO SUIT FORD W/ FORD BEARINGS
51EBK45LF	10" ELECTRIC DRUM BRAKE KIT TO SUIT 6 STUD LANDCRUISER W/ FORD BEARINGS
51EBP10L	10" ELECTRICAL BACKING PLATE - LEFT HAND SIDE
51EBP10R	10" ELECTRICAL BACKING PLATE - RIGHT HAND SIDE
51EBP12L	12" ELECTRICAL BACKING PLATE - LEFT HAND SIDE
51EBP12R	12" ELECTRICAL BACKING PLATE - RIGHT HAND SIDE
51EBPMAGB	MAGNET TO SUIT ELECTRICAL BACKING PLATE (Blister)
51EBS24B	ELECTRIC BREAKAWAY SWITCH ONLY -BLISTER
51EC35RZ	3.5T ELECTRIC COUPLING RACHET PARK- ZINC PLATED
51EC35Z	3500KG ZINC PLATED ELECTRIC COUPLING WITH ADJUSTABLE SCREW
51EFH100ZD	EZI-FOLD TRAILER DRAWBAR HINGE 100X100
51EFH105ZD	EZI-FOLD TRAILER DRAWBAR HINGEZINC-DISP 100X50
51EFH75ZD	EZI-FOLD TRAILER DRAWBAR HINGE 75X75
51EG10	EZIGUIDE WITH 10MM SPRING - COMPLETE
51EG10-SPR	SPRINGS TO SUIT EG10, SET OF 2, SPARE PARTS
51EG11	EZIGUIDE WITH 11MM SPRING - COMPLETE
51EG11-SPR	SPRINGS TO SUIT EG11, SET OF 2, SPARE PARTS
51EG13	EZIGUIDE WITH 13MM SPRING - COMPLETE
51EG13-SPR	SPRINGS TO SUIT EG13, SET OF 2, SPARE PARTS
51EG8	EZIGUIDE WITH 8MM SPIRNG - COMPLETE

The image contains two separate photographs of electrical components. The left photograph shows a silver-colored metal clamp with two mounting holes on its sides and a blue, textured plastic handle attached to one end. The right photograph shows a black plastic multi-pin connector with a cylindrical cap on one end and a row of ten gold-colored pins on the other.

[illegible]

ARK TRAILER ACCESSORIES

[illegible]

ARK TRAILER ACCESSORIES

[illegible]

ARK TRAILER ACCESSORIES



CODE NO.	DESCRIPTION
51HCL80A	HITCH COLLAR WITH ARK LOGO
51HD10X2FD	10" X 2 1/4" HUB DRUM - FORD WITH FORD BEARINGS, SEAL, NUTS & DUST COVER
51HD10X2FDP	10" X 2 1/4" HUB DRUM - FORD WITH FORD PARALLEL BEARINGS, SEAL, NUTS & DUST COVER
51HD10X2FH	10" X 2 1/4" HUB DRUM - FORD WITH HOLDEN BEARINGS, SEAL, NUTS & DUST COVER
51HD10X2HQ	10" X 2 1/4" HUB DRUM - SUIT HQ HOLDEN - HOLDEN BEARINGS, SEAL, NUTS & DUST COVER
51HD10X2HT	10" X 2 1/4" HUB DRUM - SUIT HT HOLDEN - HOLDEN BEARINGS, SEAL, NUTS & DUST COVER
51HD10X2LF	10" X 2 1/4" HUB DRUM - LANDCRUISER WITH FORD BEARINGS, SEAL, NUTS & DUST COVER
51HD10X2LFP	10" X 2 1/4" HUB DRUM - LANDCRUISER WITH FORD PARALLEL BEARINGS, SEAL, NUTS & DUST COVER
51HD10X2LH	10" X 2 1/4" HUB DRUM - LANDCRUISER WITH HOLDEN BEARINGS, SEAL, NUTS & DUST COVER
51HD12X2LF	12" X 2 1/4" HUB DRUM - LANDCRUISER 6 STUD WITH FORD BEARINGS, SEAL, NUTS & DUST COVER
51HD9X1345LF	9" X 1 3/4" HUB DRUM - SUIT LANDCRUISER 5 STUD - FORD BEARINGS, SEAL, NUTS & DUST COVER
51HD9X134FD	9" X 1 3/4" HUB DRUM - SUIT FORD - FORD BEARINGS, SEAL, NUTS & DUST COVER
51HD9X134FH	9" X 1 3/4" HUB DRUM - SUIT FORD - HOLDEN BEARINGS, SEAL, NUTS & DUST COVER
51HD9X134HQ	9" X 1 3/4" HUB DRUM - SUIT HQ HOLDEN - HOLDEN BEARINGS, SEAL, NUTS & DUST COVER
51HD9X134HT	9" X 1 3/4" HUB DRUM - SUIT HT HOLDEN - HOLDEN BEARINGS, SEAL, NUTS & DUST COVER
51HD9X134LF	9" X 1 3/4" HUB DRUM - SUIT LANDCRUISER - FORD BEARINGS, SEAL, NUTS & DUST COVER
51HD9X134LH	9" X 1 3/4" HUB DRUM - SUIT LANDCRUISER - HOLDEN BEARINGS, SEAL, NUTS & DUST COVER
51HDBS10	HUB DRUM BRAKE SHOE FOR 10" BACKING PLATE - SET OF 2
51HDBS12	BRAKE SHOES - 12" ELECTRIC BACKING PLATE -SET OF 2
51HDBS9	HUB DRUM BRAKE SHOE FOR 9" BACKING PLATE - SET OF 2
51HDL50B	HANDLE TO SUIT ALL 350KG JOCKEY WHEELS - BLISTER PACK
51HDL57	HANDLE TO SUIT HEAVY DUTY JOCKEY WHEELS

ARK TRAILER ACCESSORIES

[illegible]

ARK TRAILER ACCESSORIES

[illegible]

ARK TRAILER ACCESSORIES



CODE NO.	DESCRIPTION
51JW8CHD	HEAVY DUTY JOCKEY WHEEL - 8" STEEL RIMMED WHEEL WITH BOLT ON/WELD ON CLAMP
51JW8SHD	HEAVY DUTY JOCKEY WHEEL - 8" STEEL RIMMED WHEEL WITH SWIVEL BOLT ON/WELD ON BRACKET
51JW8SUHD	HEAVY DUTY JOCKEY WHEEL - 8" STEEL RIMMED WHEEL WITH SWIVEL U-BOLT BRACKET
51JWB10	ECONOMY JOCKEY WHEEL - 10" POLYPROPYLENE WHEEL - NO CLAMP
51JWB10C	ECONOMY JOCKEY WHEEL - 10" POLYPROPYLENE WHEEL BOLT ON/WELD ON CLAMP
51JWB10S	ECONOMY JOCKEY WHEEL - 10" POLYPROPYLENE WHEEL with SWIVEL BRACKET
51JWB10SU	ECONOMY JOCKEY WHEEL - 10" POLYPROPYLENE WHEEL with SWIVEL U-BOLT BRACKET
51JWB6	ECONOMY JOCKEY WHEEL - 6" POLYPROPYLENE WHEEL - NO CLAMP
51JWB6C	ECONOMY JOCKEY WHEEL - 6" POLYPROPYLENE WHEEL BOLT ON/WELD ON CLAMP
51JWB6S	ECONOMY JOCKEY WHEEL - 6" POLYPROPYLENE WHEEL with SWIVEL BRACKET
51JWB6SU	ECONOMY JOCKEY WHEEL - 6" POLYPROPYLENE WHEEL with SWIVEL U-BOLT BRACKET
51JWB8	ECONOMY JOCKEY WHEEL - 8" POLYPROPYLENE WHEEL - NO CLAMP
51JWB8C	ECONOMY JOCKEY WHEEL - 8" POLYPROPYLENE WHEEL BOLT ON/WELD ON CLAMP
51JWB8S	ECONOMY JOCKEY WHEEL - 8" POLYPROPYLENE WHEEL with SWIVEL BRACKET
51JWB8SU	ECONOMY JOCKEY WHEEL - 8" POLYPROPYLENE WHEEL with SWIVEL U-BOLT BRACKET
51JWBN6	6" RUBBER BOAT WHEEL & BRACKET
51JWN10	JOCKEY WHEEL - 10" SOLID RUBBER WHEEL - NO CLAMP
51JWN10C	JOCKEY WHEEL - 10" SOLID RUBBER WHEEL WITH BOLT ON/WELD ON CLAMP
51JWN10CP	JOCKEY WHEEL - 10" PNEUMATIC WHEEL WITH BOLT ON / WELD ON CLAMP
51JWN10P	JOCKEY WHEEL - 10" PNEUMATIC WHEEL - NO CLAMP
51JWN10S	JOCKEY WHEEL - 10" SOLID RUBBER WHEEL WITH SWIVEL BOLT ON/WELD ON BRACKET
51JWN10SP	JOCKEY WHEEL - 10" PNEUMATIC WHEEL WITH SWIVEL BOLT ON / WELD ON CLAMP
51JWN10SU	JOCKEY WHEEL - 10" SOLID RUBBER WHEEL WITH SWIVEL U-BOLT BRACKET

ARK TRAILER ACCESSORIES



CODE NO.	DESCRIPTION
51JWN10SUP	JOCKEY WHEEL - 10" PNEUMATIC WHEEL WITH SWIVEL U-BOLT BRACKET
51JWN6	JOCKEY WHEEL - 6" RUBBER WHEEL - NO CLAMP
51JWN6C	JOCKEY WHEEL - 6" RUBBER WHEEL WITH BOLT ON/WELD ON CLAMP
51JWN6S	JOCKEY WHEEL - 6" RUBBER WHEEL WITH SWIVEL BOLT ON/WELD ON BRACKET
51JWN6SU	JOCKEY WHEEL - 6" RUBBER WHEEL WITH SWIVEL U-BOLT BRACKET
51JWN6SUS	6" JOCKEY WHEEL 350KG - SIDEWINDER - 8 HOLE SWIVEL
51JWN8	JOCKEY WHEEL - 8" STEEL RIMMED WHEEL - NO CLAMP
51JWN8C	JOCKEY WHEEL - 8" STEEL RIMMED WHEEL WITH BOLT ON/WELD ON CLAMP
51JWN8S	JOCKEY WHEEL - 8" STEEL RIMMED WHEEL WITH SWIVEL BOLT ON/WELD ON BRACKET
51JWN8SU	JOCKEY WHEEL - 8" STEEL RIMMED WHEEL WITH SWIVEL U-BOLT BRACKET
51JWP10	PREMIUM JOCKEY WHEEL - 10" SUNRAYSIA WHEEL - NO CLAMP
51JWP10C	PREMIUM JOCKEY WHEEL - 10" SUNRAYSIA WHEEL BOLT ON/WELD ON CLAMP
51JWP10S	PREMIUM JOCKEY WHEEL - 10" SUNRAYSIA WHEEL with SWIVEL BRACKET
51JWP10SU	PREMIUM JOCKEY WHEEL - 10" SUNRAYSIA WHEEL with SWIVEL U-BOLT BRACKET
51JWP6	PREMIUM JOCKEY WHEEL - 6" SUNRAYSIA WHEEL - NO CLAMP
51JWP6C	PREMIUM JOCKEY WHEEL - 6" SUNRAYSIA WHEEL BOLT ON/WELD ON CLAMP
51JWP6S	PREMIUM JOCKEY WHEEL - 6" SUNRAYSIA WHEEL with SWIVEL BRACKET
51JWP6SU	PREMIUM JOCKEY WHEEL - 6" SUNRAYSIA WHEEL with SWIVEL U-BOLT BRACKET
51JWP8	PREMIUM JOCKEY WHEEL - 8" SUNRAYSIA WHEEL - NO CLAMP
51JWP8C	PREMIUM JOCKEY WHEEL - 8" SUNRAYSIA WHEEL BOLT ON/WELD ON CLAMP
51JWP8S	PREMIUM JOCKEY WHEEL - 8" SUNRAYSIA WHEEL with SWIVEL BRACKET
51JWP8SU	PREMIUM JOCKEY WHEEL - 8" SUNRAYSIA WHEEL with SWIVEL U-BOLT BRACKET
51JWPH	PREMIUM JOCKEY WHEEL HANDLE

ARK TRAILER ACCESSORIES



CODE NO.	DESCRIPTION
51LAB90B	ANGLE MOUNTING BRACKET SUITABLE FOR LARGE ROUND SOCKET IN BOX
51LB90B	ANGLE MOUNTING BRACKET SUITABLE FOR LARGE ROUND SOCKET IN BLISTER PACK
51LC360	FLAT MOUNTING BRACKET SUITABLE FOR LARGE ROUND SOCKET IN BOX
51LC360B	FLAT MOUNTING BRACKET SUITABLE FOR LARGE ROUND SOCKET IN BLISTER PACK
51LD10L	LED SQUARE COMBINATION LAMP 12V LEFT SIDE
51LD10ML	LED SQUARE COMBINATION LAMP 12V/24V LEFT SIDE
51LD10MR	LED SQUARE COMBINATION LAMP 12V/24V RIGHT SIDE WITH BUILT IN NUMBER PLATE LIGHT
51LD10R	LED SQUARE COMBINATION LAMP 12V RIGHT SIDE WITH BUILT IN NUMBER PLATE LIGHT
51LD10SB	LED SQUARE COMBINATION LAMP SET 12V, LEFT & RIGHT SIDE IN BLISTER WITH TRY ME BUTTON
51LD10SSB	LED SUBMERSIBLE SQUARE COMBINATION LAMP SET 12V, LEFT & RIGHT SIDE IN BLISTER WITH TRY ME BUTTON
51LD158	LED SUBMERSIBLE RECTANGULAR LAMP SET OF 2 (LEFT & RIGHT SIDES), 12V, RIGHT SIDE WITH BUILT IN NUMBER PLATE LIGHT, PRE WIRED TO 8M OF CABLE
51LD158M	LED SUBMERSIBLE RECTANGULAR LAMP SET OF 2 (LEFT & RIGHT SIDES), 12V/24V, RIGHT SIDE WITH BUILT IN NUMBER PLATE LIGHT, PRE WIRED TO
51LD15L	LED RECTANGULAR LAMP 12V LEFT SIDE
51LD15ML	LED RECTANGULAR LAMP 12V/24V LEFT SIDE
51LD15MR	LED RECTANGULAR LAMP 12V/24V RIGHT SIDE WITH BUILT IN NUMBER PLATE LIGHT
51LD15R	LED RECTANGULAR LAMP 12V RIGHT SIDE WITH BUILT IN NUMBER PLATE LIGHT
51LD15SB	LED RECTANGULAR LAMP SET 12V, LEFT & RIGHT SIDES IN BLISTER WITH TRY ME BUTTON
51LD15SSB	LED SUBMERSIBLE RECTANGULAR LAMP SET 12V, LEFT & RIGHT SIDES IN BLISTER WITH TRY ME BUTTON
51LDA70	LED AMBER MARKER 12V/24V
51LDA70B	LED AMBER MARKER 12V/24V SET OF 2 IN BLISTER WITH TRY ME BUTTON
51LDM70	LED RED/AMBER MARKER 12V/24V
51LDM70B	LED RED/AMBER MARKER 12V/24V SET OF 2 IN BLISTER WITH TRY ME BUTTON
51LDM725	SL LED R/AMBERM.VOLT POLY LENS-2.5M CA

ARK TRAILER ACCESSORIES



CODE NO.	DESCRIPTION
51LDN90	LED LICENSE PLATE LAMP 12V/24V
51LDN90B	LED LICENSE PLATE LAMP 12V/24V IN BLISTER
51LDR70	LED RED MARKER 12V/24V
51LDR70B	LED RED MARKER 12V/24V SET OF 2 IN BLISTER WITH TRY ME BUTTON
51LDR725	S.L. LED RED MULTI V. LENS -2.5M CABL
51LDU10MB	LED ULTRA SLIM LAMP 12V/24V FULLY SUBMERSIBLE IN BLISTER
51LDU15B	LED ULTRA SLIM LAMP 12V FULLY SUBMERSIBLE IN BLISTER
51LDU15MB	LED ULTRA SLIM LAMP 12V/24V FULLY SUBMERSIBLE IN BLISTER
51LDW70	LED CLEAR MARKER LAMP 12V/24V
51LDW70B	LED CLEAR MARKER LAMP 12V/24V SET OF 2 IN BLISTER WITH TRY ME BUTTON
51LDW725	LED CLEAR MARKER LAMP 12V/24V with 2.5M WIRE Pair
51LF190	7 1/2" HUB SUITS LANDCRUISER - FORD BEARINGS, DUST COVER, SEAL & NUTS IN CARTON
51LF1905	7 1/2" 5 STUD HUB SUITS LANDCRUISER - FORD BEARINGS, DUST COVER, SEAL & NUTS IN DISPLAY CARTON
51LF190D	7 1/2" HUB SUITS LANDCRUISER - FORD BEARINGS, DUST COVER, SEAL & NUTS IN DISPLAY CARTON
51LF190G	7 1/2" HUB - GALVANISED - SUITS LANDCRUISER - FORD BEARINGS, DUST COVER, SEAL & NUTS IN CARTON
51LH190	7 1/2" HUB SUITS LANDCRUISER - HOLDEN BEARINGS, DUST COVER, SEAL & NUTS IN CARTON
51LH190D	7 1/2" HUB SUITS LANDCRUISER - HOLDEN BEARINGS, DUST COVER, SEAL & NUTS IN DISPLAY CARTON
51LMP5	5 PIN LARGE ROUND METAL TRAILER PLUG IN POLY BAG
51LMP5B	5 PIN LARGE ROUND METAL TRAILER PLUG IN BLISTER PACK
51LMP7	7 PIN LARGE ROUND METAL TRAILER PLUG IN POLY BAG
51LMP7B	7 PIN LARGE ROUND METAL TRAILER PLUG IN BLISTER PACK
51LMS5	5 PIN LARGE ROUND METAL TRAILER SOCKET IN POLY BAG
51LMS5B	5 PIN LARGE ROUND METAL TRAILER SOCKET IN BLISTER PACK
51LMS7	7 PIN LARGE ROUND METAL TRAILER SOCKET IN POLY BAG
51LMS7B	7 PIN LARGE ROUND METAL TRAILER SOCKET IN BLISTER PACK
51LPP5	5 PIN LARGE ROUND PLASTIC TRAILER PLUG IN POLY BAG
51LPP5B	5 PIN LARGE ROUND PLASTIC TRAILER PLUG IN BLISTER PACK
51LPP7	7 PIN LARGE ROUND PLASTIC TRAILER PLUG IN POLY BAG
51LPP7B	7 PIN LARGE ROUND PLASTIC TRAILER PLUG IN BLISTER PACK

ARK TRAILER ACCESSORIES



CODE NO.	DESCRIPTION
51LPS5	5 PIN LARGE ROUND PLASTIC TRAILER SOCKET IN POLY BAG
51LPS5B	5 PIN LARGE ROUND PLASTIC TRAILER SOCKET IN BLISTER PACK
51LPS7	7 PIN LARGE ROUND PLASTIC TRAILER SOCKET IN POLY BAG
51LPS7B	7 PIN LARGE ROUND PLASTIC TRAILER SOCKET IN BLISTER PACK
51LSKL7B	NITE-LITE TRAILER SOCKET - 7 PIN ROUND
51LSL7	7 PIN LARGE ROUND SOCKET CONNECTED TO 1.25M ROUND CABLE WITH 7 WIRE CLIPS IN POLY BAG
51M90	ANGLE MOUNTING BRACKET SUITABLE FOR SMALL ROUND METAL SOCKET IN BOX
51MB90	ANGLE MOUNTING BRACKET SUITABLE FOR SMALL ROUND METAL SOCKET IN BLISTER PACK
51MBC34	RED PVC METAL BEARING BUDDY DUST COVER - SET OF 2 - IN POLY BAG
51MBC34B	BLUE PVC METAL BEARING BUDDY DUST COVERS - SET OF 2 - BLISTER PACK
51MBCB34	BLUE PVC METAL BEARING BUDDY DUST COVER - SET OF 2 - IN POLY BAG
51MBK32	MARINE BEARING KIT - HOLDEN - IN BLISTER PACK
51MBK35	MARINE BEARING KIT - FORD - IN BLISTER PACK
51MBK40FH	9" MECHANICAL DRUM BRAKE KIT TO SUIT FORD W/ HOLDEN BEARINGS
51MBK40HQ	9" MECHANICAL DRUM BRAKE KIT TO SUIT HQ HOLDEN W/ HOLDEN BEARINGS
51MBK40HT	9" MECHANICAL DRUM BRAKE KIT TO SUIT HT HOLDEN W/ HOLDEN BEARINGS
51MBK40LH	MECHANICAL BRAKE KIT LH PATTERN
51MBK455LF	MECHANICAL BRAKE KIT-LANDCRUISER5/FORD
51MBK45FD	9" MECHANICAL DRUM BRAKE KIT TO SUIT FORD W/ FORD BEARINGS
51MBK45LF	9" MECHANICAL DRUM BRAKE KIT TO SUIT 6 STUD LANDCRUISER W/ FORD BEARINGS
51MBP34	CHROME FINISH METAL BEARING PROTECTOR INCLUDES PVC DUST COVERS- SET OF 2 - IN POLY BAG
51MBP34B	CHROME FINISH METAL BEARING BUDDY INCLUDES PVC DUST COVERS - SET OF 2 - BLISTER PACK
51MBP50	MECHANICAL ADAPTOR PLATE - SUITS OVER-RIDE COUPLING
51MBP50G	GALVANISED MECHANICAL ADAPTOR PLATE - SUITS OVER-RIDE COUPLING
51MBP50P	POWDER COATED MECHANICAL ADAPTOR PLATE - SUITS OVER-RIDE COUPLING
51MBP50Z	ZINC PLATED MECHANICAL ADAPTOR PLATE - SUITS OVER-RIDE COUPLING
51MBP90L	9" MECHANICAL BACKING PLATE - LEFT HAND SIDE
51MBP90R	9" MECHANICAL BACKING PLATE - RIGHT HAND SIDE
51MCC34	3/4" MASTER CYLINDER PLASTIC CAP - BULK
51MCC34B	3/4" MASTER CYLINDER PLASTIC CAP - BLISTER

ARK TRAILER ACCESSORIES

[illegible]

ARK TRAILER ACCESSORIES

[illegible]

ARK TRAILER ACCESSORIES



CODE NO.	DESCRIPTION
51MS32	HOLDEN TYPE WATERPROOF BEARING SEAL - BULK PACK
51MS35	FORD TYPE WATERPROOF BEARING SEAL - BULK PACK
51MS60	6 PIN SMALL ROUND METAL TRAILER SOCKET IN POLY BAG
51MS60B	6 PIN SMALL ROUND METAL TRAILER SOCKET IN BLISTER PACK
51MS70	7 PIN SMALL ROUND METAL TRAILER SOCKET IN POLY BAG
51MS70B	7 PIN SMALL ROUND METAL TRAILER SOCKET IN BLISTER PACK
51MSK1	1" MASTER CYLINDER
51MSK34	3/4" MASTER CYLINDER
51MSK34B	3/4" MASTER CYLINDER - BLISTER
51MSK78	7/8" MASTER CYLINDER
51NPL75	NUMBER PLATE LAMP - ADR APPROVED - BULB INCLUDED IN POLY BAG
51NPL75B	NUMBER PLATE LAMP - ADR APPROVED - BULB INCLUDED - IN BLISTER PACK
51NW6	6" NYLON WHEEL TO SUIT JW6C & JW6S, BULK
51NW6B	6" NYLON WHEEL TO SUIT JW6C & JW6S - IN BLISTER PACK
51OMF110B	OUTBOARD MOTOR FLUSHER - OVAL
51OMF125B	OUTBOARD MOTOR FLUSHER - RECTANGULAR
51OMF95B	OUTBOARD MOTOR FLUSHER - ROUND
51OML170B	OUTBOARD MOTOR LOCK, STAINLESS STEEL INCLUDES TWO KEYS, SUITS SMALL TO MEDIUM OUTBOARDS
51OML225B	OUTBOARD MOTOR LOCK, STAINLESS STEEL INCLUDES TWO KEYS, SUITS MEDIUM TO LARGE OUTBOARDS
51ORC50	2000KG MECHANICAL OVER-RIDE COUPLING
51ORC50G	2000KG GALVANISED MECHANICAL OVER-RIDE COUPLING
51ORC50Z	2000KG ZINC PLATED MECHANICAL OVER-RIDE COUPLING
51ORJW350	OFF ROAD JOCKY WHEEL
51ORJW500	OFF ROAD JOCKY WHEEL
51ORJW750	OFF ROAD JOCKY WHEEL
51ORJW750D	OFF ROAD JOCKY WHEEL - DISPLAY
51ORJW750L	LOCK WHEEL HANDLE KIT SUIT ORJW750
51ORXO50	OFF ROAD OVERRIDE COUPLING 2T
51ORXOF50	OFF ROAD FIXED OVERRIDE COUPLING 3.5T
51ORXOF50R	XO SERIES COUPLING - 3.5T W/ BUILT IN PARKBRAKE
51ORXOLL	OFF ROAD COUPLING LEVER
51ORXOLP	ROTARY LOCK PIN FOR XO SERIES COUPLING
51ORXOYHR	YOKE HEADREST SUIT ORXO50

ARK TRAILER ACCESSORIES

[illegible]

ARK TRAILER ACCESSORIES

[illegible]

ARK TRAILER ACCESSORIES

[illegible]

ARK TRAILER ACCESSORIES

[illegible]

ARK TRAILER ACCESSORIES

[illegible]

ARK TRAILER ACCESSORIES

[illegible]

ARK TRAILER ACCESSORIES

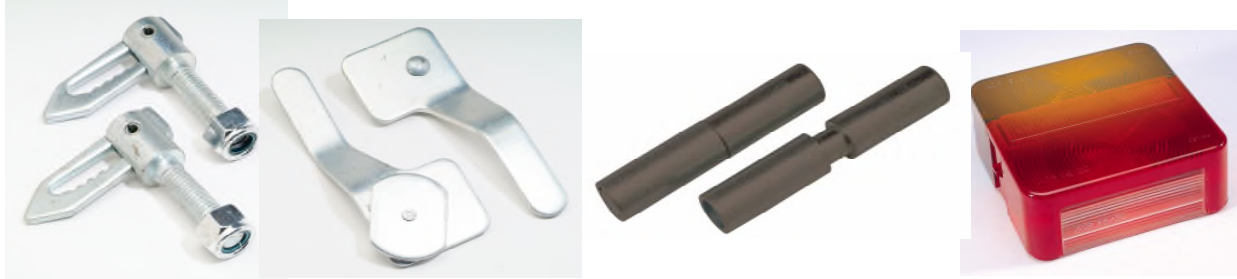
[illegible]

[illegible]

ARK TRAILER ACCESSORIES

[illegible]

ARK TRAILER ACCESSORIES



CODE NO.	DESCRIPTION
51TBH190	50X50MM HITCH BALL MOUNT, 190MM FROM CENTRE OF HITCH PIN HOLE TO CENTRE OF TOWBALL HOLE
51TBH190D	TOW BALL MOUNT PLUS TOW BALL 190mm
51TBH280	50X50MM HITCH BALL MOUNT, 280MM FROM CENTRE OF HITCH PIN HOLE TO CENTRE OF TOWBALL HOLE
51TBH280D	TOW BALL MOUNT PLUS TOW BALL 280mm
51TBHA30D	ADJUSTABLE TO BALL MOUNT PLUS TOW BALL
51TBS41B	TOWBALL SPANNER, BLISTER
51TGAB19	TAIL GATE ANTI RATTLE LATCH, BOLT TYPE - BULK
51TGAB19B	TAIL GATE ANTI RATTLE LATCHES SET OF 2, BOLT TYPE WITH NYLOC NUTS - BLISTER
51TGAW19	TAIL GATE ANTI RATTLE LATCH, WELD TYPE - BULK
51TGAW19B	TAIL GATE ANTI RATTLE LATCHES SET OF 2, WELD TYPE - BLISTER
51TGC60B	TAIL GATE CATCHES, RIGHT & LEFT SIDE, GOLD ZINC FINISH - BLISTER
51TGC60L	TRAILER TAIL GATE CATCHER - LEFT SIDE
51TGC60R	TRAILER TAIL GATE CATCHER - RIGHT SIDE
51TGH100	TAIL GATE HINGE, LARGE, BLACK
51TGH100B	TAIL GATE HINGES, LARGE SET OF 2, GOLD ZINC FINISH - BLISTER
51TGH50	TAIL GATE HINGE, SMALL, BLACK
51TGH50B	TAIL GATE HINGES, SMALL SET OF 2, ZINC FINISH - BLISTER
51TH150	6" HUB - SUITS TOYOTA - HOLDEN BEARINGS, DUST COVER, SEAL & NUTS IN CARTON
51TH150D	6" HUB - SUITS TOYOTA - HOLDEN BEARINGS, DUST COVER, SEAL & NUTS IN DISPLAY CARTON
51TH150G	6" HUB - GALVANISED - SUITS TOYOTA - HOLDEN BEARINGS, DUST COVER, MARINE SEAL & NUTS
51TH150GD	6" HUB - GALVANISED - SUITS TOYOTA - HOLDEN BEARINGS, DUST COVER, MARINE SEAL & NUTS IN DISPLAY CARTON
51TK160C	TOW KIT: 3.5T. 50MM HITCH BALL MOUNT 160MM, 3.5T. 50MM CHROME TOWBALL, 3.5T. HITCH PIN & HITCH COVER IN CARRY CASE
51TK190C	TOW KIT: 3.5T. 50MM HITCH BALL MOUNT 190MM, 3.5T. 50MM CHROME TOWBALL, 3.5T. HITCH PIN & HITCH COVER IN CARRY CASE
51TL120Z	T-LOCK WITH LOCK DUST COVER
51TL984A	REAR COMBINATION LAMP - SUITABLE FOR RIGHT & LEFT SIDE - ACRYLIC LENS W/-GLOBES & CONNECTORS/BULK
51TL984B	REAR COMBINATION LAMP - SUITABLE FOR RIGHT & LEFT SIDE - ACRYLIC LENS W/-GLOBES & CONNECTORS/BLISTER PACK
51TLC984A	REAR COMBINATION LAMP - RIGHT SIDE - ACRYLIC LENS W/-GLOBES & CONNECTORS - BULK PACK
51TLL984	POLYCARBONATE LENS TO SUIT TL984 LAMP - BULK
51TLL984B	POLYCARBONATE LENS TO SUIT TL984 LAMP IN BLISTER PACK
51TLR984A	REAR COMBINATION LAMP - LEFT SIDE

ARK TRAILER ACCESSORIES



CODE NO.	DESCRIPTION
51TLR984A	REAR COMBINATION LAMP - LEFT SIDE - ACRYLIC LENS W/-GLOBES & CONNECTORS - BULK PACK
51TLR984P	REAR COMBINATION LAMP - LEFT SIDE - POLYCARBONATE LENS - GLOBES & CONNECTORS/BULK PACK
51TP/L	BLACK SHIN PROTECTOR WITH LOGO, BULK
51TP11	BLACK SHIN PROTECTOR IN DISPLAY CARTON OF 18
51TPB11	BLACK SHIN PROTECTOR IN BLISTER PACK
51TPC400	T24LDUB FRONT CABLE W/ INTERCHANGEABLE CONNECTOR
51TPF400	EZI-CONNECT OE HARNESS 7 PIN FLAT
51TPL400	EZI-CONNECT OE HARNESS 7 PIN LARGE ROUND
51TPS400	EZI-CONNECT OE HARNESS 7 PIN SMALL ROUND
51TRF35	SPARE WHEEL AND HUB/DISC HUB HOLDER, SUITS FORD BEARINGS - IN DISPLAY CARTON
51TRH32	SPARE WHEEL AND HUB/DISC HUB HOLDER, SUITS HOLDEN BEARINGS - IN DISPLAY CARTON
51TRH45	TANDEM ROCKER HANGER 5/8" Hole
51TRKA45	TANDEM ROCKER KIT TYPE A SUITS 45MM SPRI
51TRKB45	TANDEM ROCKER KIT TYPE B SUITS 45MM SPRI
51UB2	2" U BOLT WITH NUTS AND SPRING WASHER - SET OF 2 - POLY BAG
51UB23G	50MM WINCH POST U BOLT SET OF 2 GALV
51UB24G	U BOLT 50mm x 125mm GALVANISED WITH NUTS - SET OF 2 - POLY BAG
51UB2B	2" U BOLT WITH NUTS AND SPRING WASHER - SET OF 2 - BLISTER PACK
51UB2G	2" U BOLT - SET OF 2 GALVANISED
51UB3	3" U BOLT WITH NUTS AND SPRING WASHER - SET OF 2 - POLY BAG
51UB32B	2 3/8" X 3" JOCKEY WHEELS U-BOLTS
51UB33	3" X 3" U BOLT WITH NUTS AND SPRING WASHER - SET OF 2 - NYLON BAG
51UB33B	3" X 3" U BOLT WITH NUTS AND SPRING WASHER - SET OF 2 - BLISTER PACK
51UB33G	75mm x 100mm GALVANISED U BOLT WITH NUTS - SET OF 2 - POLY BAG
51UB39	U BOLT 39MM TO SUIT 39MM ROUND AXLE, WITH NYLOC NUT, BLACK - BULK
51UB39G	U BOLT 39MM TO SUIT 39MM ROUND AXLE, WITH NYLOC NUT, GALVANISED - BULK
51UB39GB	U BOLT 39MM TO SUIT 39MM ROUND AXLE, SET OF 2, GALVANISED WITH NYLOC NUT, - BLISTER
51UB3B	3" U BOLT WITH NUTS AND SPRING WASHER - SET OF 2 - BLISTER PACK
51UB3G	3" U BOLT GALVANISED WITH NUTS AND SPRING WASHER - SET OF 2
51UB4	4" U BOLT WITH NUTS AND SPRING WASHER - SET OF 2 - POLY BG

ARK TRAILER ACCESSORIES



CODE NO.	DESCRIPTION
51UB40	U BOLT 40MM TO SUIT 40MM SQUARE AXLE, WITH NYLOC NUT, BLACK - BULK
51UB40G	U BOLT 40MM TO SUIT 40MM SQUARE AXLE, WITH NYLOC NUT, GALVANISED - BULK
51UB40GB	U BOLT 40MM TO SUIT 40MM SQUARE AXLE, SET OF 2, GALVANISED WITH NYLOC NUT, - BLISTER
51UB44G	100MM WINCH POST U BOLT SET OF 2 GALV
51UB45	U BOLT 45MM TO SUIT 45MM SQUARE AXLE, WITH NYLOC NUT, BLACK - BULK
51UB4515	U BOLT 45MM BLACK H/DUTY - BULK
51UB4515G	U BOLT 45MM GALVANISED H/DUTY - BULK
51UB45G	U BOLT 45MM TO SUIT 45MM SQUARE AXLE, WITH NYLOC NUT, GALVANISED - BULK
51UB45GB	U BOLT 45MM TO SUIT 45MM SQUARE AXLE, SET OF 2 GALVANISED WITH NYLOC NUT, BLACK - BLISTER
51UB4B	4" U BOLT WITH NUTS AND SPRING WASHER - SET OF 2 - BLISTER PACK
51UB4G	4" U-BOLT - SET OF 2 GALVANISED
51UB5015	U-BOLT 50mm BLACK
51UB501G	U-BOLT 50mm GALVANISED
51UCK5700	U CHANNEL KIT TO SUIT ORJW500/ORJW750
51VD103FD	10" ROTOR - FD/US DACROMET
51VD10LB	SPARE BEARINGS INNER/CONE FOR VD103FD
51VD10S35	SPARE OIL SEALS FOR VD103FD
51VD10SB	SPARE BEARINGS OUTER/CONE FOR VD10SB
51VD123LD	12" ROTOR - 6 STUD LC/DEX DACROMET
51VD12LB	DEXTER STYLE LARGE BEARING 25580 FOR 12" HUBS
51VD12LJB	DEXTER STYLE LARGE BEARING 25580 (JAPANESE)
51VD12S48	SPARE OIL SEAL WITH ID48MM FOR VD123LD
51VD12SB	DEXTER STYLE SMALL BEARING 15123 FOR 12" HUBS
51VD12SJB	DEXTER STYLE SMALL BEARING 15123 (JAPANESE)
51VDR12HTG	1/2" VELOX DISC HUB - GALVANISED - SUIT HT HOLDEN - HOLDEN BEARINGS DUST CAPS, MARINE SEAL AND NUTS
51W115125W	BOAT WINCH 1150kg 12-1/5-1/1-1
51W273C	BOAT WINCH 275kg 3-1 W/CABLE
51W273W	BOAT WINCH 275kg 3-1
51W654W	BOAT WINCH 650kg 4-1
51W905W	BOAT WINCH 900kg 5-1/1-1
51WD1200R	WEIGHT DISTRIBUTION SYSTEM - 356KG - 545KG
51WD600R	WEIGHT DISTRIBUTION SYSTEM - 135KG - 275KG
51WD800R	WEIGHT DISTRIBUTION SYSTEM - 275KG - 356KG

ARK TRAILER ACCESSORIES

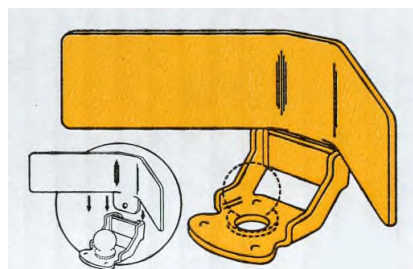


CODE NO.	DESCRIPTION
51WH210B	SNAP ON WINCH HANDLE - W905, W115125
51WLB10B	LED WORK LAMP - BLACK multivolt
51WLJ300D	WHEEL LOCK JAW, FITS TYRES FROM 140MM TO 295MM INCLUDES LANYARD + 3 KEYS, 1 KEY WITH LED LIGHT
51WLW10B	LED WORK LAMP - WHITE multivolt
51WPC100	WINCH POST CAP, BLUE, SUITS 100MM X 50MM POST
51WPC25	BHT1 WATER PROOF WIRE CONNECTOR, SUITS SUBMERSIBLE LAMP
51WPC25B	BHT1 WATER PROOF WIRE CONNECTOR, SUITS SUBMERSIBLE LAMP, BLISTER
51WPC50	WINCH POST CAP, BLUE, SUITS 50MM X 50MM POST
51WPC75	WINCH POST CAP, BLUE, SUITS 75MM X 50MM POST
51WYO45S	12V ELECTRIC WINCH 4500LB/2040KG W/ SYNTHETIC ROPE
51WYO90S	12V ELECTRIC WINCH 9000LB/4077KG W/ SYNTHETIC ROPE
51XOCBPV4	XO COUPLING BASE PLATE W/ RECOVERY POINT

WHEEL BEARINGS

33T6002	MARINE TRAILER BEARING KIT - HOLDEN
33T6004	MARINE TRAILER BEARING KIT - FORD
33T6005	TRAILER BEARING KIT - FORD
33T6007	TRAILER BEARING KIT - HOLDEN
33SS10	BEARING BUDDIES

TRAILER LOCKS



CODE	APPLICATION
53CM001	COUPLE-MATE
53CM002	COUPLE-MATE BASE PLATE
53CM056	TREGG PIN SPRING LOCK COMBINATION
53CM062	HITCH PIN 85 MM